



Franchise with a proven extended stay model



84.6%*

of reservations come from
ESA direct channels
at no additional cost

\$75.61

Average
daily
rate

81.2%

Consumed
room nights from
7+ length of stay

Largest Midscale Extended Stay Hotel

618 hotels in 45 states.

Streamlined Operating Model

Creating an economical labor approach to minimize overhead costs for stronger returns.

Commercial Engine Support

Solely dedicated to attracting long-term travelers and delivering revenue to hotels at a lower cost.

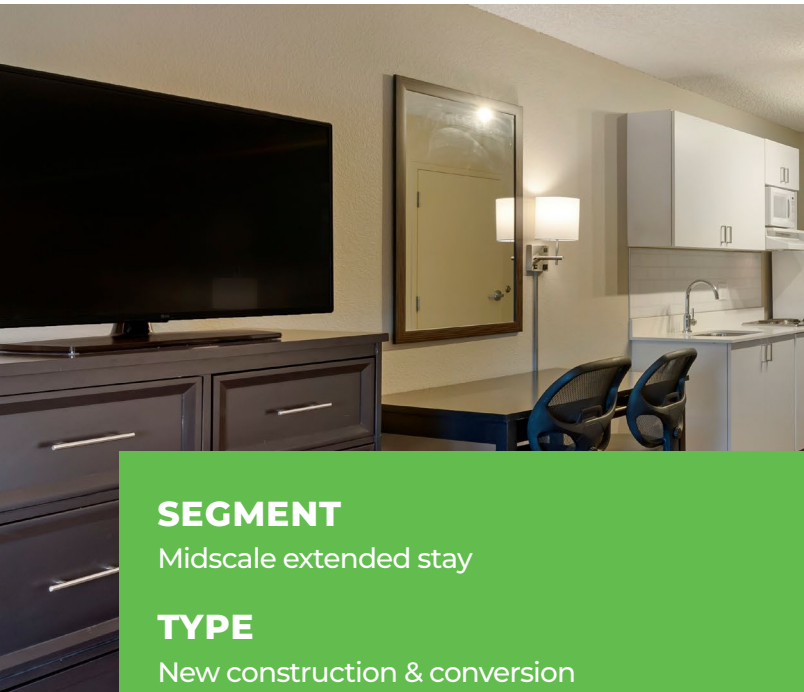
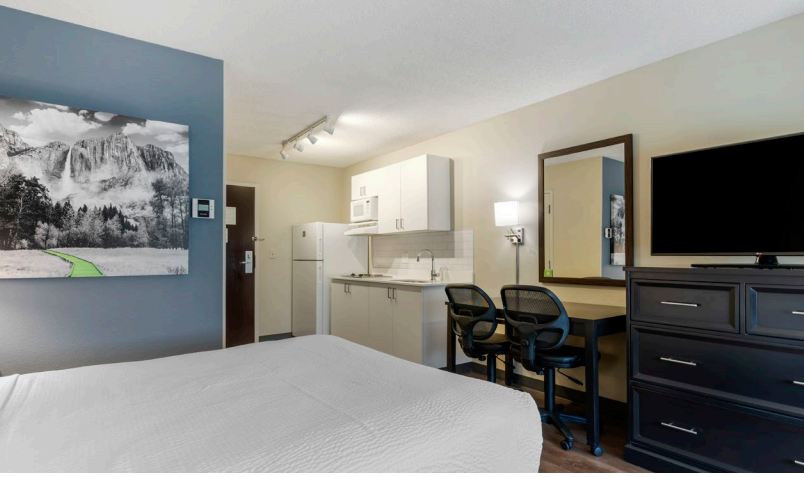


Having extended stay in a name is a big advantage to consumers knowing your hotels. We see a big difference in their distribution channels driving more direct bookings and national accounts to our hotels giving us a steady stream of business.

Tyler Brown, COO/Founder
Lodging Advisory Group



*See Item 19 of the 2023 ESA Suites Franchise Disclosure Document for additional information. 259 or 42% of the Brand Hotels in the 2022 calendar year had an average daily rate ("ADR") amount at or above the ADR amount described above. A new franchisee's results may differ from these results.



SEGMENT

Midscale extended stay

TYPE

New construction & conversion

AMENITY HIGHLIGHTS

Fully equipped kitchens

On-site guest laundry

Weekly housekeeping

KEY FEES

Initial franchise fee: \$50K

Royalty fee: 5%

Service contributions: 5%



CONTACT US

844.542.4148

franchise@esa.com

Extended Stay America - Leading the way in extended stay

Since our first hotel in 1995, every decision we make is for the extended stay. We evolved the extended stay business model based on experience in efficiently operating our own properties and attracting long-term travelers. Capitalize on the high demand for extended stay hotels. Leverage our strong brand equity and proven business model as a foundation for strong returns.

This information is not intended as an offer to sell or the solicitation of an offer to buy a franchise. It is for information purposes only. The offering is by prospectus only. Certain states regulate the offer and sale of franchises. This communication is not directed by us to the residents of any of those states. If you are a resident of or want to locate a franchise in one of these states, we will not offer you a franchise unless and until we have complied with applicable pre-sale registration (or obtained an applicable exemption from registration) and disclosure requirements in your state. ©ESH Strategies Franchise LLC, 13024 Ballantyne Corporate Place, Suite 1000, Charlotte, NC 28277 (844) 542-4148. MN #F-8939